

Great Lakes Water Supply Program CONSTRUCTION NOTIFICATION

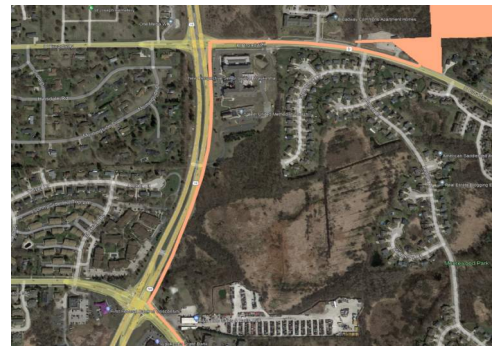
Friday, May 19, 2023

Locations noted below as **NEW** indicates new entries in this Construction Notification
Locations noted below as **UPDATE** indicates updated information has been provided in this Construction Notification

Community Construction Impact

City of Waukesha

UPDATE	Where:	Les Paul Parkway from Racine Avenue to E. Broadway
	When:	December 5, 2022
	Duration:	28-weeks
	General Description:	Water Supply Pipeline – Open Cut
	Notes:	Right lane closure northbound Les Paul Parkway at Racine Avenue. All local access will be maintained.
<hr/>		
UPDATE	Where:	E. Broadway from Les Paul Parkway to Booster Pumping Station
	When:	April 10, 2023
	Duration:	7-weeks
	General Description:	Water Supply Pipeline – Utility Investigations & Open Cut
	Notes:	2-way vehicular traffic will be maintained with lane restrictions. Westbound lane on E. Broadway to the Booster Pump Station will be closed to through traffic, on May 5 th for 21-days. See greatwateralliance.com for detour information. All local access will be maintained.



City of New Berlin

UPDATE **Where:** WisDOT I-43 from Racine Court to East of Calhoun Road

When: April 11, 2022

Duration: 71-weeks

General Description: Return Flow Pipeline – Open Cut & Trenchless Crossings

Notes: All local access will be maintained on I-43.



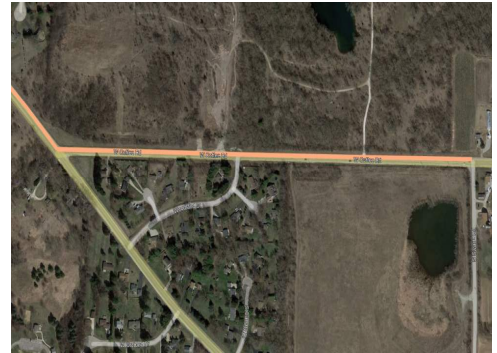
UPDATE **Where:** Coffee Road from Racine Avenue to Swartz Road

When: July 10, 2023

Duration: 2-weeks

General Description: Water Supply Pipeline – Pavement Restoration

Notes: 2-way vehicular traffic will be maintained with lane restrictions and flagging.
All local access will be maintained.



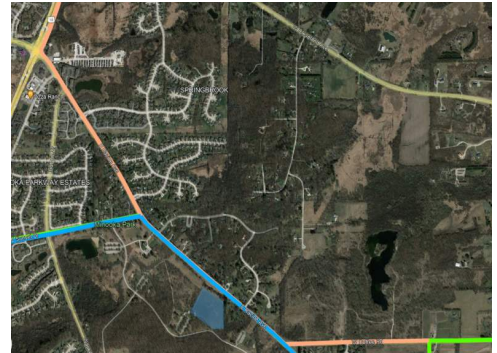
UPDATE **Where:** S. Racine Avenue from Coffee Road to Les Paul Parkway (STH 59/164)

When: June 12, 2023

Duration: 4-weeks

General Description: Water Supply Pipeline – Pavement Restoration

Notes: 2-way vehicular traffic will be maintained with lane restrictions and flagging.
All local access will be maintained.



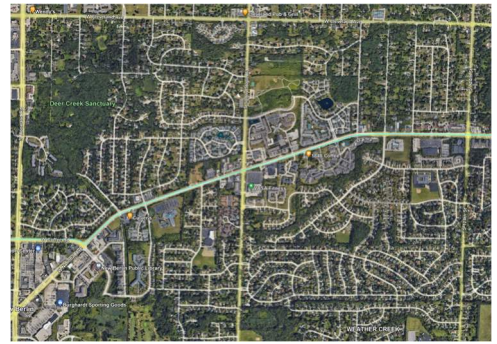
NEW **Where:** W. National Avenue from Coffee Road to 124th Street

When: May 24, 2023

Duration: 3-weeks

General Description: Water Supply Pipeline – Pavement Restoration

Notes: 2-way vehicular traffic will be maintained with lane restrictions and flagging.
All local access will be maintained.



City of Franklin, Milwaukee County

UPDATE **Where:** Ryan Road (STH 100) at Root River (west of 60th Street)

When: January 9, 2023

Duration: 23-weeks

General Description: Return Flow Pipeline – Utility Repair & Trenchless Crossings

Notes: 2-way vehicular traffic will be maintained with lane restrictions.
All local access will be maintained.



Where: Ryan Road (STH-100) from Ryan Road (CTH H) to 80th Street

When: February 24, 2023

Duration: 6-weeks

General Description: Return Flow Pipeline – Open Cut Restoration

Notes: 2-way vehicular traffic will be maintained with lane restrictions.
All local access will be maintained.



Where: Oakwood Road

When: May 17, 2021

Duration: 26-months

General Description: Return Flow Pipeline – Outfall Building



City of West Allis

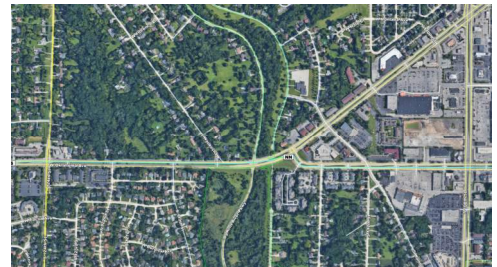
UPDATE **Where:** W. Oklahoma Avenue from 124th Street to STH 100/108th Street

When: January 16, 2023

Duration: 20-weeks

General Description: Water Supply Pipeline – Open Cut and Trenchless

Notes: 2-way vehicular traffic will be maintained with lane restrictions.
Eastbound W. Oklahoma Avenue will be closed to through traffic at W. National Avenue, on January 18th for 19-weeks.
All local access will be maintained.



UPDATE **Where:** Root River Parkway at W. Oklahoma Avenue

When: January 16, 2023

Duration: 20-weeks

General Description: Pedestrian and Bike Path Detour

Notes: Root River Parkway (Oak Leaf Trail) crossing at Oklahoma Avenue will be closed for 19-weeks. See greatwateralliance.com for detour information.
All local access will be maintained.



City of Milwaukee

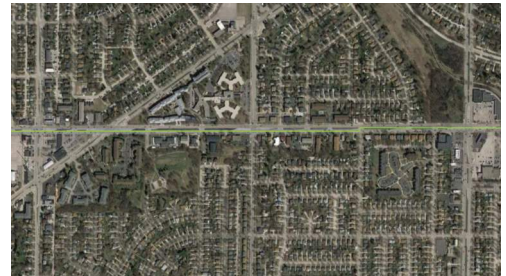
UPDATE **Where:** W. Oklahoma Avenue from 92nd Street to 76th Street

When: March 13, 2023

Duration: 20-weeks

General Description: Water Supply Pipeline – Open Cut and Trenchless

Notes: 2-way vehicular traffic will be maintained with lane restrictions.
Northbound and Southbound 84th Street will be closed to through traffic at W. Oklahoma Avenue, on May 5th for 3-weeks.
See greatwateralliance.com for detour information.
All local access will be maintained.



This historic project will bring much needed water to Waukesha, and the Great Water Alliance is committed to completing the work in the most efficient and least disruptive ways possible. Thank you for your patience and cooperation during this construction.



Using Great Lakes Water the Right Way

www.greatwateralliance.com