



Great Lakes Water Supply Program CONSTRUCTION NOTIFICATION

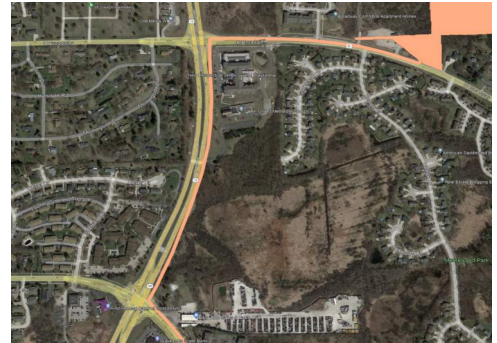
Friday, March 10, 2023

Locations noted below as **NEW** indicates new entries in this Construction Notification
Locations noted below as **UPDATE** indicates updated information has been provided in this Construction Notification

Community Construction Impact

City of Waukesha

- UPDATE** **Where:** Les Paul Parkway from Racine Avenue to E. Broadway
- When:** December 5, 2022
- Duration:** 13-weeks
- General Description:** Water Supply Pipeline – Open Cut
- Notes:** Right lane closure northbound Les Paul Parkway at Racine Avenue.
All local access will be maintained.
-
- Where:** E. Broadway from Les Paul Parkway to Booster Pumping Station
- When:** April 10, 2023
- Duration:** 3-weeks
- General Description:** Water Supply Pipeline – Utility Investigations & Open Cut
- Notes:** 2-way vehicular traffic will be maintained with lane restrictions.
E. Broadway at Les Paul Parkway east intersection will be closed to through traffic, on April 14th for 7-days.
Westbound lane on E. Broadway to the Booster Pump Station will be closed to through traffic, on April 17th for 9-days.
See greatwateralliance.com for detour information.
All local access will be maintained.



UPDATE **Where:** West Avenue from Dodie Drive to Sentinel Drive

When: March 20, 2023

Duration: 2-weeks

General Description: Water Supply Pipeline – Open Cut

Notes: 2-way vehicular traffic will be maintained with lane restrictions and flagging.
All local access will be maintained.



UPDATE **Where:** Les Paul Parkway at East Avenue

When: March 20, 2023

Duration: 1-week

General Description: Water Supply Pipeline – Open Cut

Notes: 2-way vehicular traffic will be maintained with lane restrictions and flagging.
All local access will be maintained.



City of New Berlin

UPDATE **Where:** WisDOT I-43 from Racine Court to East of Calhoun Road

When: April 11, 2022

Duration: 53-weeks

General Description: Return Flow Pipeline – Open Cut & Trenchless Crossings

Notes: All local access will be maintained on I-43.



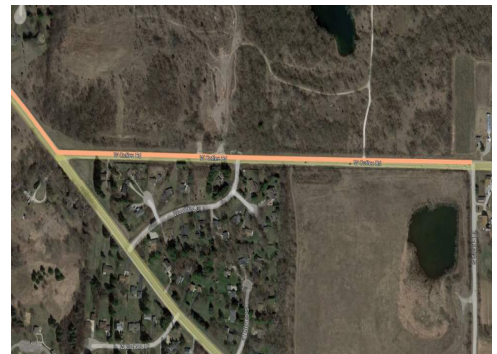
UPDATE **Where:** Coffee Road from Racine Avenue to Swartz Road

When: March 2, 2023

Duration: 6-weeks

General Description: Water Supply Pipeline – Open Cut

Notes: 2-way vehicular traffic will be maintained with lane restrictions and flagging.
Coffee Road from Racine Avenue to Swartz Road will be closed to through traffic, on March 6th for 10-days.
See greatwateralliance.com for detour information.
All local access will be maintained.



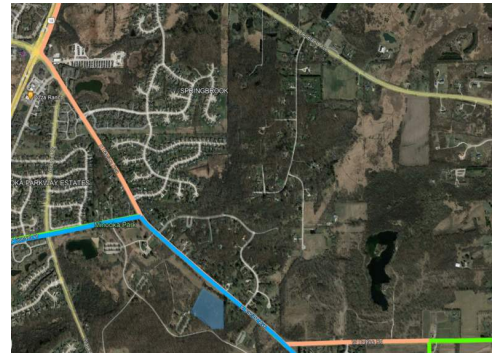
Where: Racine Avenue from Coffee Road to Ann Louise Drive

When: February 20, 2023

Duration: 5-weeks

General Description: Water Supply Pipeline – Open Cut

Notes: 2-way vehicular traffic will be maintained with lane restrictions and flagging.
All local access will be maintained.



City of Franklin, Milwaukee County

Where: Ryan Road (STH 100) at Root River (west of 60th Street)

When: February 6, 2023

Duration: 15-weeks

General Description: Return Flow Pipeline – Utility Repair & Trenchless Crossings

Notes: 2-way vehicular traffic will be maintained with lane restrictions.
All local access will be maintained.



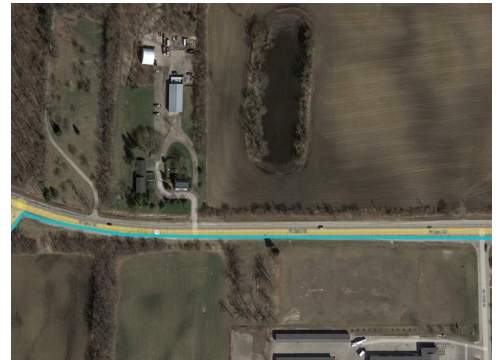
UPDATE **Where:** Ryan Road (STH-100) from Ryan Road (CTH H) to 80th Street

When: February 20, 2023

Duration: **3-weeks**

General Description: Return Flow Pipeline – Open Cut

Notes: 2-way vehicular traffic will be maintained with lane restrictions.
All local access will be maintained.

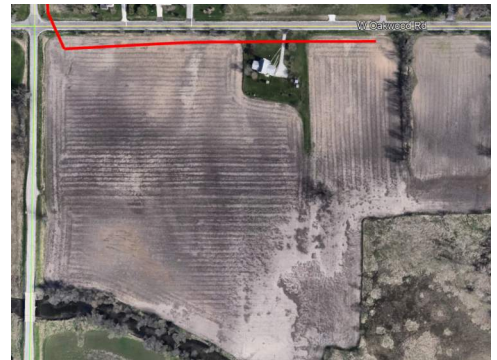


Where: Oakwood Road

When: May 17, 2021

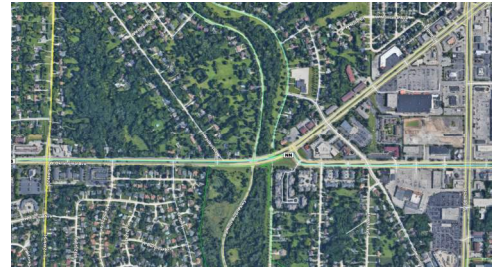
Duration: 22-months

General Description: Return Flow Pipeline – Outfall Building

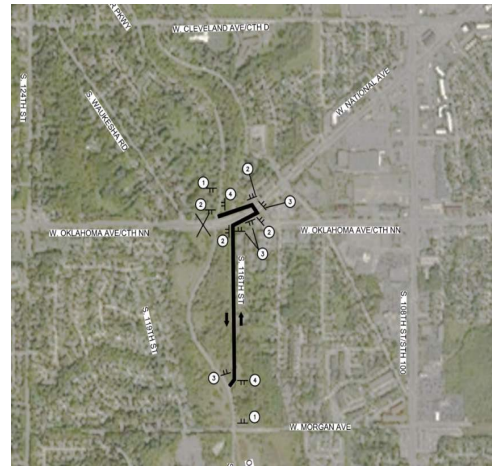


City of West Allis

- Where:** W. Oklahoma Avenue from 124th Street to STH 100/108th Street
- When:** January 16, 2023
- Duration:** 12-weeks
- General Description:** Water Supply Pipeline – Open Cut and Trenchless
- Notes:** 2-way vehicular traffic will be maintained with lane restrictions.
Eastbound W. Oklahoma Avenue will be closed to through traffic at W. National Avenue, on January 18th for 8-weeks.
All local access will be maintained.

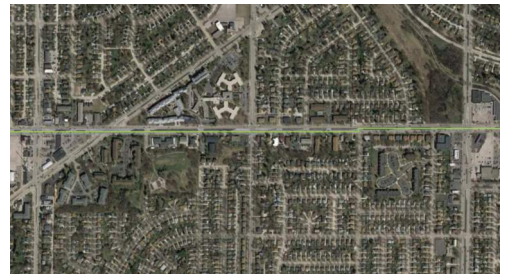


- Where:** Root River Parkway at W. Oklahoma Avenue
- When:** January 16, 2023
- Duration:** 12-weeks
- General Description:** Pedestrian and Bike Path Detour
- Notes:** Root River Parkway (Oak Leaf Trail) crossing at Oklahoma Avenue will be closed for 12-weeks.
See greatwateralliance.com for detour information.
All local access will be maintained.



City of Milwaukee

- UPDATE** **Where:** W. Oklahoma Avenue from 92nd Street to 76th Street
- When:** March 13, 2023
- Duration:** 18-weeks
- General Description:** Water Supply Pipeline – Open Cut and Trenchless
- Notes:** 2-way vehicular traffic will be maintained with lane restrictions.
Northbound and Southbound Beloit Road will be closed to through traffic at W. Oklahoma Avenue, on April 3rd for 3-weeks.
See greatwateralliance.com for detour information.
All local access will be maintained.



This historic project will bring much needed water to Waukesha, and the Great Water Alliance is committed to completing the work in the most efficient and least disruptive ways possible. Thank you for your patience and cooperation during this construction.



Using Great Lakes Water the Right Way

www.greatwateralliance.com