

Great Lakes Water Supply Program CONSTRUCTION NOTIFICATION

Friday, January 13, 2023

Locations noted below as **NEW** indicates new entries in this Construction Notification
Locations noted below as **UPDATE** indicates updated information has been provided in this Construction Notification

Community Construction Impact

City of Waukesha

UPDATE **Where:** Les Paul Parkway from Racine Avenue to E. Broadway

When: December 5, 2022

Duration: 9-weeks

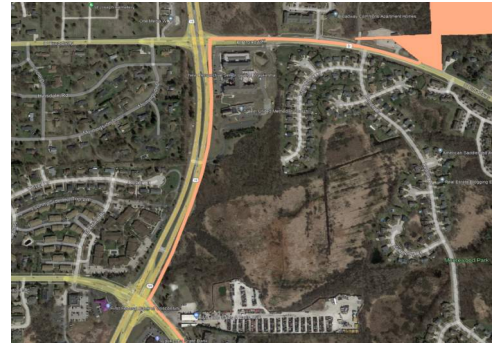
General Description: Water Supply Pipeline – Open Cut

Notes: Right 2-lane closure northbound Les Paul Parkway at Racine Avenue, on January 16th for 3-weeks. Expect delays.

E. Broadway at Les Paul Parkway east intersection side will be closed to through traffic, on January 27th for 3-days.

See greatwateralliance.com for detour information.

All local access will be maintained.



UPDATE **Where:** E. Broadway from Les Paul Parkway to Booster Pumping Station

When: January 16, 2023

Duration: 6-weeks

General Description: Water Supply Pipeline – Utility Investigations & Open Cut

Notes: 2-way vehicular traffic will be maintained with lane restrictions.

Westbound lane on E. Broadway to the Booster Pump Station will be closed to through traffic, on February 6th for 9-days.

See greatwateralliance.com for detour information.

All local access will be maintained.



City of New Berlin

Where: WisDOT I-43 from Racine Court to East of Calhoun Road

When: April 11, 2022

Duration: 47-weeks

General Description: Return Flow Pipeline – Open Cut & Trenchless Crossings

Notes: All local access will be maintained on I-43.



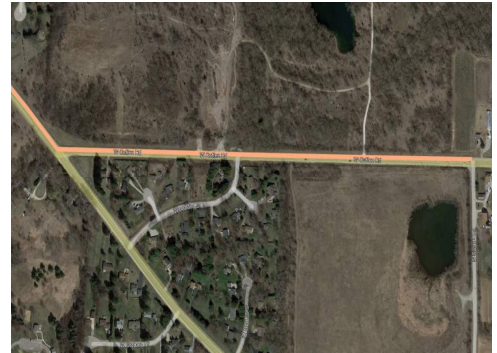
UPDATE **Where:** Coffee Road from Racine Avenue to Swartz Road

When: February 27, 2023

Duration: 6-weeks

General Description: Water Supply Pipeline – Open Cut

Notes: 2-way vehicular traffic will be maintained with lane restrictions and flagging.
Coffee Road from Racine Avenue to Swartz Road will be closed to through traffic, on March 6th for 3-days.
See greatwateralliance.com for detour information.
All local access will be maintained.



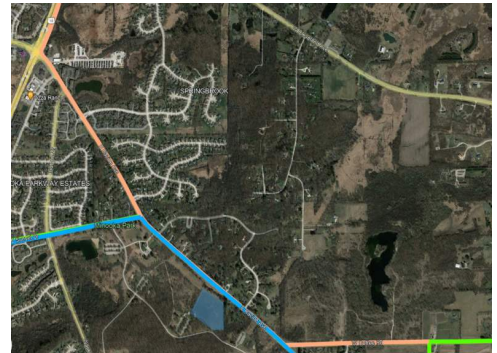
NEW **Where:** Racine Avenue from Coffee Road to Ann Louise Drive

When: April 10, 2023

Duration: 2-weeks

General Description: Water Supply Pipeline – Open Cut

Notes: 2-way vehicular traffic will be maintained with lane restrictions and flagging.
All local access will be maintained.



City of Franklin, Milwaukee County

UPDATE	Where:	Ryan Road (STH 100) at Root River (west of 60 th Street)
	When:	January 9, 2023
	Duration:	12-weeks
	General Description:	Return Flow Pipeline – Utility Repair & Trenchless Crossings
	Notes:	2-way vehicular traffic will be maintained with lane restrictions. All local access will be maintained.

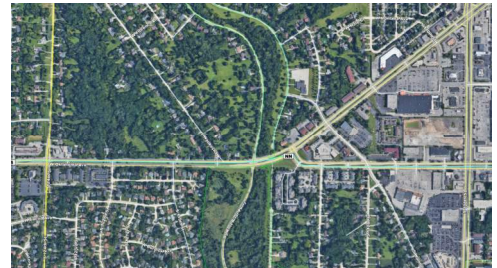


UPDATE	Where:	Oakwood Road
	When:	May 17, 2021
	Duration:	21-months
	General Description:	Return Flow Pipeline – Outfall Building



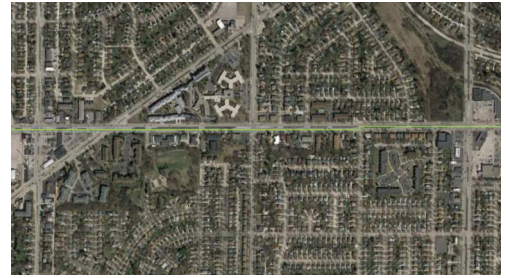
City of West Allis

UPDATE	Where:	W. Oklahoma Avenue from 124 th Street to STH 100/108 th Street
	When:	January 16, 2023
	Duration:	10-weeks
	General Description:	Water Supply Pipeline – Open Cut and Trenchless
	Notes:	2-way vehicular traffic will be maintained with lane restrictions. Eastbound W. Oklahoma Avenue will be closed to through traffic at W. National Avenue, on January 18 th for 6-weeks. All local access will be maintained.



City of Milwaukee

NEW	Where:	W. Oklahoma Avenue from 92 nd Street to 76 th Street
	When:	March 6, 2023
	Duration:	16-weeks
	General Description:	Water Supply Pipeline – Open Cut and Trenchless
	Notes:	2-way vehicular traffic will be maintained with lane restrictions. All local access will be maintained.



This historic project will bring much needed water to Waukesha, and the Great Water Alliance is committed to completing the work in the most efficient and least disruptive ways possible. Thank you for your patience and cooperation during this construction.



Using Great Lakes Water the Right Way

www.greatwateralliance.com