



All-Freeman Football Team

MacCudden's excellence for four years at West has helped him to be picked as All-Freeman Football Team Player of the Year

► 1B, Sports

HAPPY THANKSGIVING



The FREEMAN

A Trusted Tradition since 1859

Inside



Delsman joins Freeman team

Chuck Delsman brings 48 years of experience covering prep sports in the Lake Country area to The Freeman.

► 1B, Sports



JOHN SCHOENKNECHT

Herman Salen: World War One Travels and Much More

Future DA leaves college to enlist in World War I

► 7A, History



Riding through the woods

Hoof Beats Express recreates the magic of horse-drawn sleigh rides

► 6A, Local



Photos by Kenny YooSpecial to The Freeman

HARTLAND — Student council member and fourth-grader Morgan Woods and second-grade student Molly Hudson load up a bowl with pumpkin filling during the University Lake School pumpkin pie bake in Hartland on Tuesday morning. The University Lake School Lower School Student Council and parent volunteers baked pumpkin pies from start to finish to help sponsor children through the Christmas Clearing Council of Waukesha County.

A pie of perfection



Pouring of pumpkin pie batter.



Student council advisor Julie Wold pours pumpkin pie batter.



Fourth-grade student and student council member Cole Brown wipes down a filled table of ingredients during the University Lake School pumpkin pie bake in Hartland.

WAUKESHA WATER PLAN

Proposed contract gains unanimous approval in first Milwaukee hearing

Will head to full councils in both cities

By Hannah Weikel
hweikel@conley.net.com
262-513-2651

MILWAUKEE — Waukesha's water contract withstood its first test before Milwaukee elected officials in the Steering and Rules Committee Tuesday and was unanimously passed without changes to the full Common Council.

Both Milwaukee Mayor Tom Barrett and Waukesha Mayor Shawn Reilly offered opening statements to the committee and described the effort that went into the months-long negotiation process between the two municipalities to iron out the inter-governmental agreement that will bring \$42 million over 20 years.

"There have been high moments and low moments with what should happen here," Barrett said of the negotiations. "But this is a great victory for both the people in Waukesha and in Milwaukee."

See WATER, PAGE 12A

Financial planning and reflection key to handling holiday anxieties

By Jake Meister
jmeister@conley.net.com
262-513-2661

OCONOMOWOC — In living rooms across the country families routinely gather each December to pop in their favorite holiday flick, or view the copious amounts of Christmas special marathons on television. The consumption of "A Charlie Brown Christmas," "Home Alone," or "A Christmas Story" is often done as religiously as a visit to a place of worship. It's probably a good thing the best forms of holiday-themed media provide a fantastic form of escapism because for many delivering the same form of glee these films perpetuate causes fantastic anxiety.

See HOLIDAY, PAGE 10A

INDEX

Business.....4A
Classified.....9B
Comics.....7B
Crosswords.....5B, 6B
Ask the Doctors.....7B
Lottery.....2A
Obituaries.....9A
Opinion.....8A
Sports.....1B
TimeOut.....11B, 12B
Weather.....12A

Volume 159, No. 169

Fun Things To Do This Weekend

Holiday Craft & Gift Expo, 9 a.m. to 5 p.m. Friday and Saturday, 10 a.m. to 4 p.m. Sunday, Milwaukee County Sports Complex, 60th and Ryan Road in Franklin. Free parking. \$5 admission for 13 and older. www.craftfair-wisconsin.com

German Christmas Market of Oconomowoc, 10 a.m. to 10 p.m. Friday, 10 a.m. to 11 p.m. Saturday and 10 a.m. to 4 p.m. Sunday, Village Green, corner of Main Street and Wisconsin Avenue. Free. Food and retail vendors, beer tent, music, children's activities.

ThankfulForParks Free Weekend, Friday through Sunday, Waukesha County Parks. Free entry at Fox Brook Park, Fox River Park, Menomonee Park, Minooka Park & Minooka Dog Exercise Area, Mukwonago Park & Mukwonago Dog Exercise Area, Muskego Park, Nagsawauke Park and Nashotah Park & Nashotah Dog Exercise Area.

Horse-drawn carriage rides, 6 p.m. to 9 p.m. Friday and 1 p.m. to 5 p.m. Saturday, downtown Waukesha.

Christmas Tree Fundraiser, 11 a.m. to 4 p.m. Friday, Saturday and Sunday, at Zachariah's Acres, N74-

W35911 Servant's Way, Town of Oconomowoc. Freshly cut trees from local Wisconsin nurseries will be available. Cocoa, crafts, haywagon rides and more. All proceeds will benefit children with special needs. zachariahsacres.org.

Pictures with Santa, 1 p.m. to 3 p.m. Saturday, Fruits of the Spirit Candles, 349 W. Broadway, Waukesha. Free.

No paper on Thanksgiving

There will be no Freeman published on Thursday. Have a wonderful Thanksgiving.

WEATHER

Tomorrow: Partly cloudy
High 41
Low 30
See complete forecast on 12A



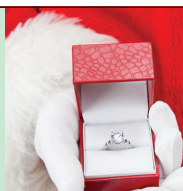
TO SUBSCRIBE TO THE FREEMAN, call 262-542-2500 or go online at: gmtoday.com/subscribe

DAN'S L&L FINE JEWELRY

Buying and Selling Jewelry Since 1981
New, Used and Estate Jewelry

615 N. Barstow St.
Waukesha, WI 53186

262-549-5512



Fill Your Christmas Stockings
with Silver & Gold from:

DAN'S L&L FINE JEWELRY

Nice People, Nice Prices, Great Selection!

Open Tuesdays 10-5 through Christmas; Wed. - Fri. 10-6; Sat. 10-3

FIVE-DAY FORECAST

TONIGHT

Mostly cloudy

27

TOMORROW

Partly cloudy

41/30

FRIDAY

Breezy. Slight chance of showers

51/35

SATURDAY

Partly cloudy and cooler

38/23

SUNDAY

Partly cloudy

32/22

REGIONAL FORECAST

Superior 34/25

Ashland 34/25

Wausau 38/27

Green Bay 40/29

Appleton 40/29

West Bend 42/31

Milwaukee 42/31

Waukesha 42/31

Rockford 43/30

Chicago 42/32

La Crosse 42/33

Oshkosh 42/33

Beaver Dam 41/28

Marathon 42/30

Waukesha 42/31

Waukesha 42/31

Waukesha 42/31

Waukesha 42/31

Waukesha 42/31

Waukesha 42/31

Waukesha 42/31

Waukesha 42/31

Waukesha 42/31

Waukesha 42/31

Waukesha 42/31

Waukesha 42/31

Waukesha 42/31

Waukesha 42/31

Waukesha 42/31

Waukesha 42/31

Waukesha 42/31

Waukesha 42/31

Waukesha 42/31

Waukesha 42/31

Waukesha 42/31

Waukesha 42/31

Waukesha 42/31

Waukesha 42/31

Waukesha 42/31

Waukesha 42/31

Waukesha 42/31

Waukesha 42/31

Waukesha 42/31

Waukesha 42/31

Waukesha 42/31

Waukesha 42/31

Waukesha 42/31

Waukesha 42/31

Waukesha 42/31

Waukesha 42/31

Waukesha 42/31

Waukesha 42/31

Waukesha 42/31

Waukesha 42/31

Waukesha 42/31

Waukesha 42/31

Waukesha 42/31

Waukesha 42/31

Waukesha 42/31

Waukesha 42/31

Waukesha 42/31

Waukesha 42/31

Waukesha 42/31

Waukesha 42/31

Waukesha 42/31

Waukesha 42/31

Waukesha 42/31

Waukesha 42/31

Waukesha 42/31

Waukesha 42/31

Waukesha 42/31

Waukesha 42/31

Waukesha 42/31

Waukesha 42/31

Waukesha 42/31

Waukesha 42/31

Waukesha 42/31

Waukesha 42/31

Waukesha 42/31

Waukesha 42/31

Waukesha 42/31

Waukesha 42/31

Waukesha 42/31

Waukesha 42/31

Waukesha 42/31

Waukesha 42/31

Waukesha 42/31

Waukesha 42/31

Waukesha 42/31

Waukesha 42/31

Waukesha 42/31

Waukesha 42/31

Waukesha 42/31

Waukesha 42/31

Waukesha 42/31

Waukesha 42/31

Waukesha 42/31

Waukesha 42/31

Waukesha 42/31

Waukesha 42/31

Waukesha 42/31

Waukesha 42/31

Waukesha 42/31

Waukesha 42/31

Waukesha 42/31

NATIONAL FORECAST

Thurs., Nov. 23, 2017

Mostly cloudy. Lows in the mid- to upper 20s. Southwest winds 5 to 10 mph.

Thanksgiving Day. Partly sunny in the morning, then clearing. Highs in the lower 40s. West winds 5 to 10 mph.

TUESDAY

Partly cloudy

41/30

FRIDAY

Breezy. Slight chance of showers

51/35

SATURDAY

Partly cloudy and cooler

38/23

SUNDAY

Partly cloudy

32/22

Waukesha 42/31

Waukesha 42/31

Waukesha 42/31

Waukesha 42/31

Waukesha 42/31

Waukesha 42/31

Waukesha 42/31

Waukesha 42/31

Waukesha 42/31

Waukesha 42/31

Waukesha 42/31

Waukesha 42/31

Waukesha 42/31

Waukesha 42/31

Waukesha 42/31

Waukesha 42/31

Waukesha 42/31

Waukesha 42/31

Waukesha 42/31

Waukesha 42/31

Waukesha 42/31

Waukesha 42/31

Waukesha 42/31

Waukesha 42/31

Waukesha 42/31

Waukesha 42/31

Waukesha 42/31

Waukesha 42/31

Waukesha 42/31

Waukesha 42/31

Waukesha 42/31

Waukesha 42/31

Waukesha 42/31

Waukesha 42/31

Waukesha 42/31

Waukesha 42/31

Waukesha 42/31

Waukesha 42/31

Waukesha 42/31

Waukesha 42/31

Waukesha 42/31

Waukesha 42/31

Waukesha 42/31

Waukesha 42/31

Waukesha 42/31

Waukesha 42/31

Waukesha 42/31

Waukesha 42/31

Waukesha 42/31

Waukesha 42/31

Waukesha 42/31

Waukesha 42/31

Waukesha 42/31

Waukesha 42/31

Waukesha 42/31

Waukesha 42/31

Waukesha 42/31

Waukesha 42/31

Waukesha 42/31

Waukesha 42/31

Waukesha 42/31

Waukesha 42/31

Waukesha 42/31

Waukesha 42/31

Waukesha 42/31

Waukesha 42/31

Waukesha 42/31

Waukesha 42/31

Waukesha 42/31

Waukesha 42/31

Waukesha 42/31

Waukesha 42/31

Waukesha 42/31

Waukesha 42/31

Waukesha 42/31

Waukesha 42/31

Waukesha 42/31

Waukesha 42/31

Waukesha 42/31

Waukesha 42/31

Waukesha 42/31

Waukesha 42/31

Waukesha 42/31

Waukesha 42/31

Waukesha 42/31

Waukesha 42/31

Waukesha 42/31

Waukesha 42/31

Waukesha 42/31

Waukesha 42/31

SOUTHEASTERN WISCONSIN

Tonight: Mostly cloudy. Lows in the mid- to upper 20s. Southwest winds 5 to 10 mph.

Thanksgiving Day. Partly sunny in the morning, then clearing. Highs in the lower 40s. West winds 5 to 10 mph.

TUESDAY

Partly cloudy

41/30

FRIDAY

Breezy. Slight chance of showers

51/35

SATURDAY

Partly cloudy and cooler

38/23

SUNDAY

Partly cloudy

32/22

Waukesha 42/31

Waukesha 42/31

Waukesha 42/31

Waukesha 42/31

Waukesha 42/31

Waukesha 42/31

Waukesha 42/31

Waukesha 42/31

Waukesha 42/31

Waukesha 42/31

Waukesha 42/31

Waukesha 42/31

Waukesha 42/31

Waukesha 42/31

Waukesha 42/31

Waukesha 42/31

Waukesha 42/31

Waukesha 42/31

Waukesha 42/31

Waukesha 42/31

Waukesha 42/31

Waukesha 42/31

Waukesha 42/31

Waukesha 42/31

Waukesha 42/31

Waukesha 42/31

Waukesha 42/31

Waukesha 42/31

Waukesha 42/31

Waukesha 42/31

Waukesha 42/31

Waukesha 42/31

Waukesha 42/31

Waukesha 42/31

Waukesha 42/31

Waukesha 42/31

Waukesha 42/31

Waukesha 42/31

Waukesha 42/31

Waukesha 42/31

Waukesha 42/31

Waukesha 42/31

Waukesha 42/31

Waukesha 42/31

Waukesha 42/31

Waukesha 42/31

Waukesha 42/31

Waukesha 42/31

Waukesha 42/31

Waukesha 42/31

Waukesha 42/31

Waukesha 42/31

Waukesha 42/31

Waukesha 42/31

Waukesha 42/31

Waukesha 42/31

Waukesha 42/31

Waukesha 42/31

Waukesha 42/31

Waukesha 42/31

Waukesha 42/31

Waukesha 42/31

Waukesha 42/31

Waukesha 42/31

Waukesha 42/31

Waukesha 42/31

Waukesha 42/31

Waukesha 42/31

Waukesha 42/31

Waukesha 42/31