



Great Lakes Water Supply Program CONSTRUCTION NOTIFICATION

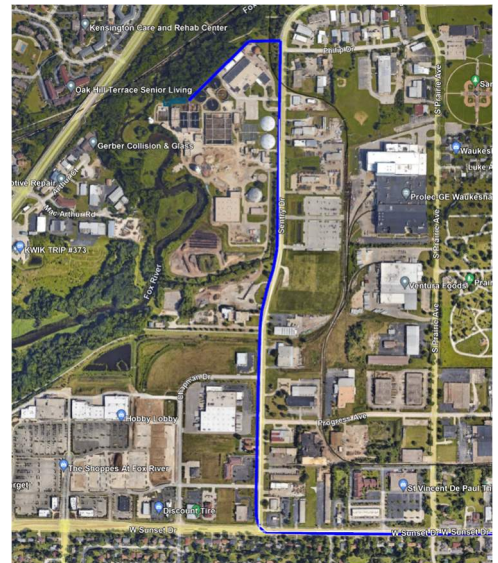
Friday, November 18, 2022

Locations noted below as **NEW** indicates new entries in this Construction Notification
Locations noted below as **UPDATE** indicates updated information has been provided in this Construction Notification

Community Construction Impact

City of Waukesha

UPDATE	Where:	Sentry Drive from Philip Drive to W. Sunset Drive
	When:	September 12, 2022
	Duration:	12-weeks
	General Description:	Return Flow Pipeline – Restoration
	Notes:	2-way vehicular traffic will be maintained with lane restrictions. All local access will be maintained.



City of Waukesha, Village of Waukesha

UPDATE	Where:	Les Paul Parkway from S. East Avenue to E. Sunset Drive
	When:	September 5, 2022
	Duration:	14-weeks
	General Description:	Return Flow Pipeline – Restoration
	Notes:	2-way vehicular traffic will be maintained with lane restrictions on Les Paul Parkway. All local access will be maintained.

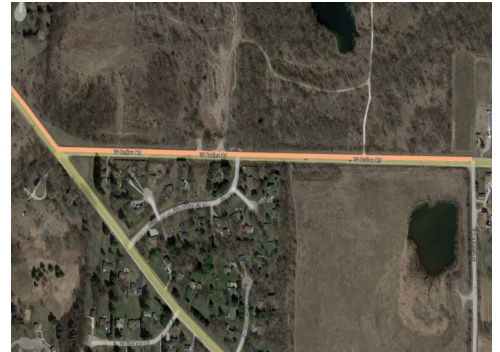


City of New Berlin

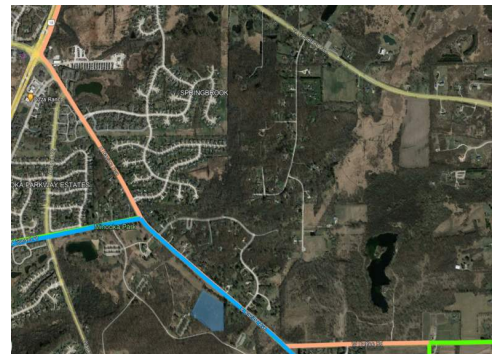
UPDATE	Where:	WisDOT I-43 from Racine Court to East of Calhoun Road
	When:	April 11, 2022
	Duration:	36-weeks
	General Description:	Return Flow Pipeline – Open Cut & Trenchless Crossings
	Notes:	All local access will be maintained on I-43.



UPDATE	Where:	Coffee Road from Racine Avenue to Swartz Road
	When:	January 12, 2023
	Duration:	6-weeks
	General Description:	Water Supply Pipeline – Open Cut
	Notes:	2-way vehicular traffic will be maintained with lane restrictions and flagging. All local access will be maintained.

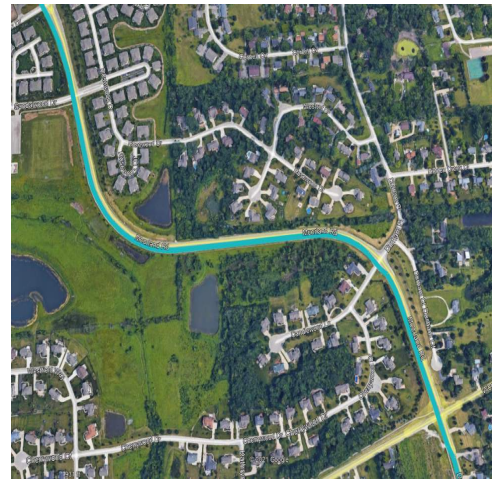


UPDATED	Where:	S. Racine Avenue from S. Swartz Road to Les Paul Parkway
	When:	October 24, 2022
	Duration:	12-weeks
	General Description:	Water Supply Pipeline – Open Cut
	Notes:	2-way vehicular traffic will be maintained with lane restrictions and flagging. E. Sunset Drive at Racine Avenue will be closed to through traffic, on November 16 th for 4-days. Racine Avenue from Coffee Road to Les Paul Parkway will be closed to through traffic, on November 18 th for 3-days. Racine Avenue from Guthrie Road to Les Paul Parkway will be closed to northbound through traffic, on December 8 th for 10-day. See greatwateralliance.com for detour information. All local access will be maintained.



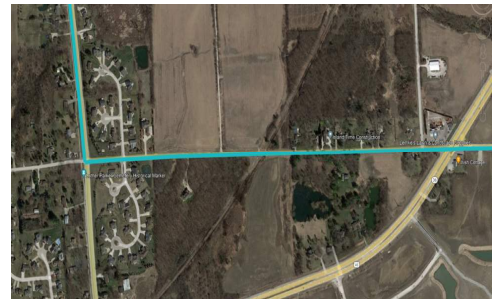
City of Muskego

NEW	Where:	Moorland Road from Janesville Road to Woods Road
	When:	November 7, 2022
	Duration:	2-weeks
	General Description:	Return Flow Pipeline – Pavement Restoration
	Notes:	2-way vehicular traffic will be maintained with lane restrictions and flagging. All local access will be maintained.

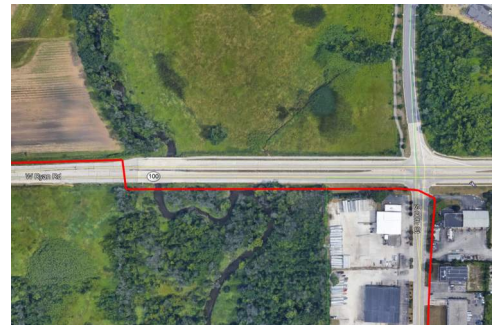


City of Franklin, Milwaukee County

NEW	Where:	W. Ryan Road from North Cape Road to W. Loomis Rd.
	When:	November 7, 2022
	Duration:	2-weeks
	General Description:	Return Flow Pipeline – Restoration
	Notes:	2-way traffic will be maintained with lane restrictions and flagging. All local access will be maintained.



UPDATE	Where:	Ryan Road (STH 100) at Root River (west of 60 th Street)
	When:	Winter 2022
	Duration:	TBD
	General Description:	Return Flow Pipeline – Trenchless Crossing
	Notes:	2-way traffic will be maintained with lane restrictions. All local access will be maintained.



UPDATE

Where: 60th Street from Ryan Road (STH 100) to Oakwood Road

When: April 18, 2022

Duration: 31-weeks

General Description: Return Flow Pipeline – Restoration

Notes: 2-way traffic will be maintained with lane restrictions.
All local access will be maintained.



Where: Oakwood Road

When: May 17, 2021

Duration: 20-months

General Description: Return Flow Pipeline – Outfall Building



City of West Allis

NEW

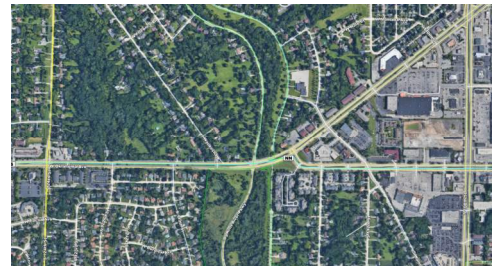
Where: W. Oklahoma Avenue from 124th Street to STH 100/108th Street

When: November 28, 2022

Duration: 16-weeks

General Description: Water Supply Pipeline – Open Cut and Trenchless

Notes: 2-way traffic will be maintained with lane restrictions.
All local access will be maintained.



This historic project will bring much needed water to Waukesha, and the Great Water Alliance is committed to completing the work in the most efficient and least disruptive ways possible. Thank you for your patience and cooperation during this construction.



Using Great Lakes Water the Right Way

www.greatwateralliance.com