



## Great Lakes Water Supply Program CONSTRUCTION NOTIFICATION

Friday, September 9, 2022

Locations noted below as **NEW** indicates new entries in this Construction Notification  
Locations noted below as **UPDATE** indicates updated information has been provided in this Construction Notification

### Community Construction Impact

#### City of Waukesha

<b>UPDATE</b>	<b>Where:</b>	Sentry Drive from Philip Drive to W. Sunset Drive
	<b>When:</b>	September 12, 2022
	<b>Duration:</b>	4-weeks
	<b>General Description:</b>	Return Flow Pipeline – Restoration
	<b>Notes:</b>	2-way vehicular traffic will be maintained with lane restrictions. All local access will be maintained.


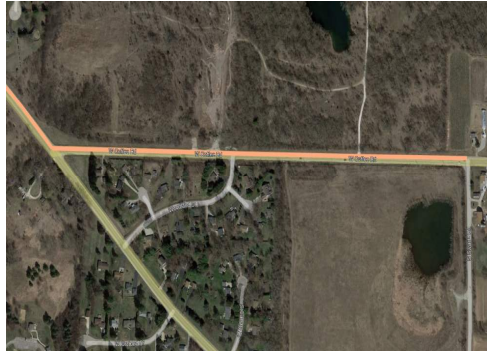

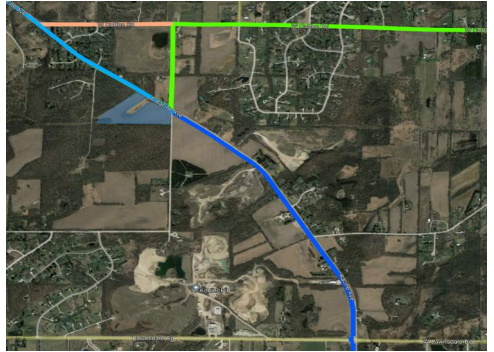


#### City of Waukesha, Village of Waukesha

<b>UPDATE</b>	<b>Where:</b>	Les Paul Parkway from S. East Avenue to E. Sunset Drive
	<b>When:</b>	September 5, 2022
	<b>Duration:</b>	6-weeks
	<b>General Description:</b>	Return Flow Pipeline – Restoration
	<b>Notes:</b>	2-way vehicular traffic will be maintained with lane restrictions on Les Paul Parkway. All local access will be maintained.



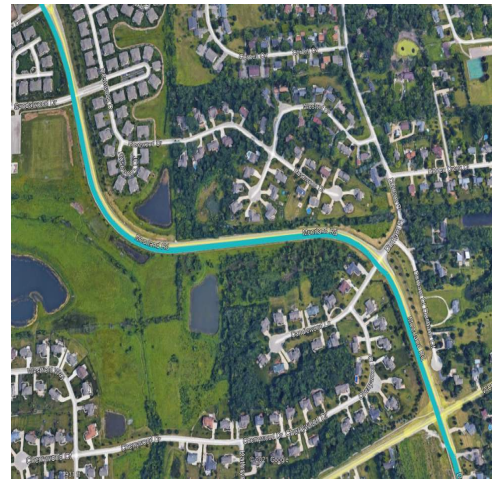
## City of New Berlin

<div>UPDATE</div>	<div><div>Where:</div><div>When:</div><div>Duration:</div><div>General Description:</div><div>Notes:</div></div> <div><div>WisDOT I-43 from Racine Court to East of Calhoun Road</div><div>April 11, 2022</div><div>26-weeks</div><div>Return Flow Pipeline – Open Cut &amp; Trenchless Crossings</div><div>All local access will be maintained on I-43.</div></div>	
	<div><div>Where:</div><div>When:</div><div>Duration:</div><div>General Description:</div><div>Notes:</div></div> <div><div>Coffee Road from Racine Avenue to Swartz Road</div><div>September 26, 2022</div><div>6-week</div><div>Water Supply Pipeline – Open Cut</div><div>2-way vehicular traffic will be maintained with lane restrictions and flagging. All local access will be maintained.</div></div>	
	<div><div>Where:</div><div>When:</div><div>Duration:</div><div>General Description:</div><div>Notes:</div></div> <div><div>Coffee Road from Swartz Road to National Avenue</div><div>September 23, 2022</div><div>6-week</div><div>Water Supply Pipeline – Paving</div><div>Coffee Road from Racine Avenue to National Avenue will be closed to through traffic. See <a href="http://greatwateralliance.com">greatwateralliance.com</a> for detour information. All local access will be maintained.</div></div>	
<div>NEW</div>	<div><div>Where:</div><div>When:</div><div>Duration:</div><div>General Description:</div><div>Notes:</div></div> <div><div>Racine Avenue from Coffee Road to Lawnsdale Road</div><div>September 13, 2022</div><div>3-weeks</div><div>Return Flow Pipeline – Open Cut</div><div>Southbound Racine Avenue from Les Paul Parkway to Lawnsdale Drive will be closed to through traffic. See <a href="http://greatwateralliance.com">greatwateralliance.com</a> for detour information. All local access will be maintained.</div></div>	



## City of Muskego

<b>UPDATE</b>	<b>Where:</b>	Moorland Road from Janesville Road to Woods Road
	<b>When:</b>	July 18, 2022
	<b>Duration:</b>	10-weeks
	<b>General Description:</b>	Return Flow Pipeline – Restoration
	<b>Notes:</b>	2-way vehicular traffic will be maintained with lane restrictions and flagging. All local access will be maintained.



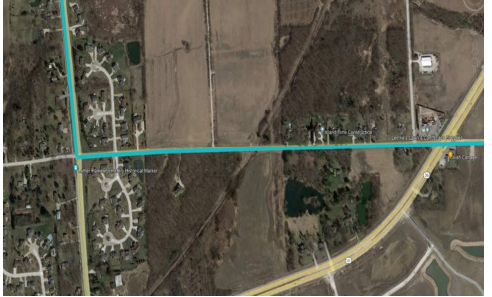
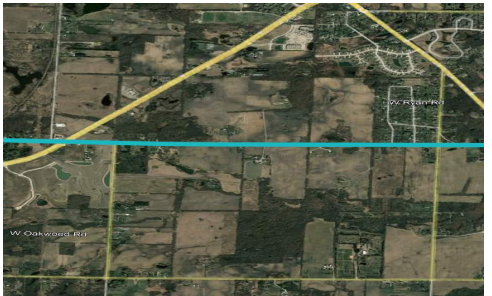

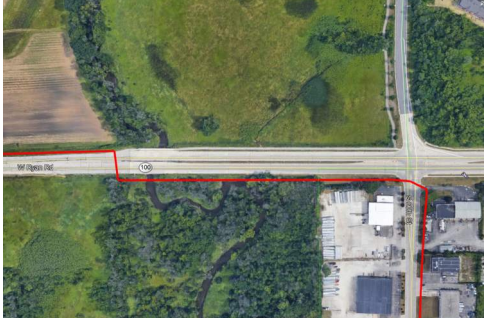
<b>UPDATE</b>	<b>Where:</b>	Durham Drive from Schultz Lane to Hawks Trail
	<b>When:</b>	March 7, 2022
	<b>Duration:</b>	29-weeks
	<b>General Description:</b>	Return Flow Pipeline – Restoration
	<b>Notes:</b>	2-way traffic will be maintained with lane restrictions and flagging for local traffic. Single lane closure with flagging during work hours. Durham Road from Janesville Road to N. Cape Road will be closed to through traffic, on September 15 <sup>th</sup> for 10-days. See <a href="https://greatwateralliance.com">greatwateralliance.com</a> for detour information. All local access will be maintained.



<b>UPDATE</b>	<b>Where:</b>	N. Cape Road from Boxhorn Drive to Ryan Road
	<b>When:</b>	September 19, 2022
	<b>Duration:</b>	2-weeks
	<b>General Description:</b>	Return Flow Pipeline – Water Service Repairs
	<b>Notes:</b>	2-way traffic will be maintained with lane restrictions and flagging. All local access will be maintained.



## City of Franklin, Milwaukee County

<b>UPDATE</b>	<b>Where:</b>	W. Ryan Road from North Cape Road to W. Loomis Rd.	
	<b>When:</b>	September 12, 2022	
	<b>Duration:</b>	4-weeks	
	<b>General Description:</b>	Return Flow Pipeline – Open Cut	
	<b>Notes:</b>	2-way traffic will be maintained with lane restrictions and flagging. W. Ryan Road from N. Cape Road to W. Loomis Road will be closed to through traffic on September 12 <sup>th</sup> for 2-weeks. See <a href="https://greatwateralliance.com">greatwateralliance.com</a> for detour information. All local access will be maintained.	
	<b>Where:</b>	W. Ryan Road from W. Loomis Rd. to 92 <sup>nd</sup> Street	
	<b>When:</b>	February 28, 2022	
	<b>Duration:</b>	33-weeks	
	<b>General Description:</b>	Return Flow Pipeline – Restoration	
	<b>Notes:</b>	2-way traffic will be maintained with lane restrictions and flagging. All local access will be maintained.	
	<b>Where:</b>	Ryan Road (STH 100) from St. Martins Road to Root River (west of 60 <sup>th</sup> Street)	
	<b>When:</b>	March 7, 2022	
	<b>Duration:</b>	30-weeks	
	<b>General Description:</b>	Return Flow Pipeline – Open Cut & Restoration	
	<b>Notes:</b>	2-way traffic will be maintained with lane restrictions. All local access will be maintained.	
	<b>Where:</b>	Ryan Road (STH 100) at Root River (west of 60 <sup>th</sup> Street)	
	<b>When:</b>	Fall 2022	
	<b>Duration:</b>	TBD	
	<b>General Description:</b>	Return Flow Pipeline – Trenchless Crossing	
	<b>Notes:</b>	2-way traffic will be maintained with lane restrictions. All local access will be maintained.	



**Where:** 60<sup>th</sup> Street from Ryan Road (STH 100) to Oakwood Road

**When:** April 18, 2022

**Duration:** 23-weeks

**General Description:** Return Flow Pipeline – Restoration

**Notes:** 2-way traffic will be maintained with lane restrictions.  
All local access will be maintained.



**Where:** Oakwood Road

**When:** May 17, 2021

**Duration:** 19-months

**General Description:** Return Flow Pipeline – Outfall Building



#### City of West Allis

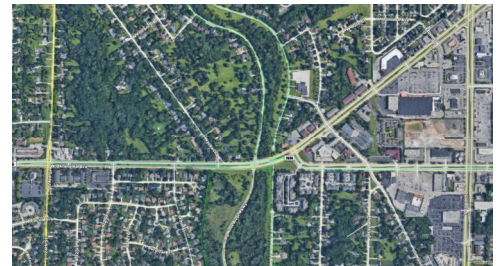
**Where:** W. Oklahoma Avenue from 124<sup>th</sup> Street to 114<sup>th</sup> Street

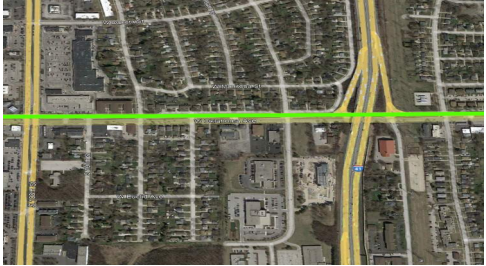
**When:** October 3, 2022

**Duration:** 6-weeks

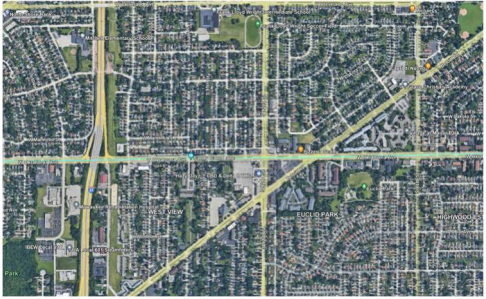
**General Description:** Water Supply Pipeline – Open Cut and Trenchless

**Notes:** 2-way traffic will be maintained with lane restrictions.  
All local access will be maintained.



<b>UPDATE</b>	<b>Where:</b>	W. Oklahoma Avenue from 107 <sup>th</sup> Street to Zoo Freeway (I-41)	
	<b>When:</b>	June 20, 2022	
	<b>Duration:</b>	11-weeks	
	<b>General Description:</b>	Water Supply Pipeline – Restoration	
	<b>Notes:</b>	2-way traffic will be maintained with lane restrictions and flagging. I-41 southbound to W. Oklahoma Avenue eastbound will be closed. All local access will be maintained.	

### City of Milwaukee

<b>UPDATE</b>	<b>Where:</b>	W. Oklahoma Avenue from Zoo Freeway (I-41) to 84 <sup>th</sup> Street	
	<b>When:</b>	July 6, 2022	
	<b>Duration:</b>	18-weeks	
	<b>General Description:</b>	Water Supply Pipeline – Open Cut and Trenchless	
	<b>Notes:</b>	2-way traffic will be maintained with lane restrictions and flagging. All local access will be maintained.	

This historic project will bring much needed water to Waukesha, and the Great Water Alliance is committed to completing the work in the most efficient and least disruptive ways possible. Thank you for your patience and cooperation during this construction.



*Using Great Lakes Water the Right Way*

[www.greatwateralliance.com](http://www.greatwateralliance.com)