



Great Lakes Water Supply Program CONSTRUCTION NOTIFICATION

Friday, October 8, 2021

Locations noted below as **NEW** indicates new entries in this Construction Notification
Locations noted below as **UPDATE** indicates updated information has been provided in this Construction Notification

Community Construction Impact

City of Waukesha

Where: Sentry Drive at Clean Water Plant
When: TBD
Duration: TBD
General Description: Return Flow Pipeline – Trenchless Crossings
Notes: All local access will be maintained



UPDATE **Where:** S. West Avenue from Sunset Drive to Les Paul Parkway
When: May 17, 2021
Duration: 22-weeks
General Description: Return Flow Pipeline – Open Cut
Notes: 2-way vehicular traffic will be maintained with lane restrictions and flagging.
S. West Avenue at Sunset Drive will be closed to through traffic on September 8th for 6-weeks.
See greatwateralliance.com for detour information.
All local access will be maintained.



NEW

Where: E. Broadway near Les Paul Parkway

When: August 2, 2021

Duration: 25-months

General Description: Water Supply Booster Pump Station, Ground Storage and Elevated Water Storage Tanks



City of Waukesha, Village of Waukesha

Where: Sunset Drive from Sentry Drive to S. West Avenue

When: March 10, 2021

Duration: 7-months

General Description: Return Flow Pipeline – Open Cut Restoration

Notes: 2-way vehicular traffic will be maintained with lane restrictions and flagging. All local access will be maintained.



UPDATE

Where: Les Paul Parkway at S. East Avenue

When: November 1, 2021

Duration: 3-weeks

General Description: Return Flow Pipeline – Trenchless Crossings

Notes: 2-way vehicular traffic will be maintained with lane restrictions and flagging. All local access will be maintained.



Where: Les Paul Parkway from S. West Avenue to 1,750' S. Sunset Drive

When: TBD

Duration: TBD

General Description: Return Flow Pipeline – Open Cut



UPDATE Where: E. Sunset Drive from Les Paul Parkway to S. Racine Avenue

When: June 28, 2021

Duration: 16-weeks

General Description: Return Flow Pipeline – Open Cut Restoration

Notes: 2-way vehicular traffic will be maintained with lane restrictions and flagging.
All local access will be maintained



UPDATE Where: S. Racine Avenue from E. Sunset Drive to S. Swartz Road

When: October 11, 2021

Duration: 8-weeks

General Description: Return Flow Pipeline – Open Cut

Notes: S. Racine Avenue from Les Paul Parkway to Lawnsdale Road will be closed on October 22nd for 3-days.
W. Coffee Road at S. Racine Avenue will be closed to through traffic on October 28th for 2-days.
Woodland Drive at S. Racine Avenue will be closed to through traffic on November 2nd for 1-days.
S. Racine Avenue from Les Paul Parkway to Lawnsdale Road will be closed on November 5th for 3-days.
S. Swartz Drive at S. Racine Avenue to be closed to through traffic on November 29th for 2-days.
See greatwateralliance.com for detour information.
2-way vehicular traffic will be maintained with lane restrictions and flagging.
All local access will be maintained



City of New Berlin

NEW	Where:	S. Racine Avenue from Swartz Road to Lawnsdale Road
	When:	October 11, 2021
	Duration:	1-week
	General Description:	Return Flow Pipeline – Open Cut Restoration
	Notes:	2-way vehicular traffic will be maintained with lane restrictions and flagging. All local access will be maintained



Where:	WisDOT I-43 from Racine Court to Martin Road
When:	TBD
Duration:	TBD
General Description:	Return Flow Pipeline – Open Cut & Trenchless Crossings
Notes:	All local access will be maintained I-43.



Where:	WisDOT I-43 at Muskego Creek
When:	TBD
Duration:	TBD
General Description:	Return Flow Pipeline – Trenchless Crossings
Notes:	All local access will be maintained on I-43.



Where: Moorland Road from Westridge Drive to Woods Road

When: August 9, 2021

Duration: 11-weeks

General Description: Return Flow Pipeline – Open Cut

Notes: 2-way traffic will be maintained with lane restrictions and flagging.
West Woods Edge Road at Moorland Road will be closed on October 7th for 14-days.
All local access will be maintained.



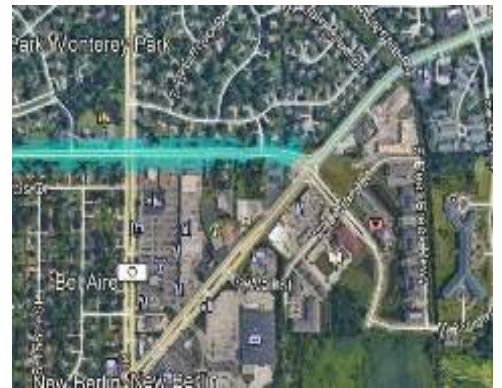
Where: Coffee Road from Moorland Road to National Avenue

When: July 27, 2021

Duration: 16-weeks

General Description: Water Supply Pipeline – Restoration

Notes: 2-way traffic will be maintained with lane restrictions and flagging.
All local access will be maintained.



UPDATE Where: National Avenue from Coffee Road to 124th Avenue

When: June 7, 2021

Duration: 28-weeks

General Description: Water Supply Pipeline – Open Cut

Notes: 2-way traffic will be maintained with lane restrictions and flagging.
All local access will be maintained.



City of New Berlin, City of West Allis

UPDATE Where: W. Oklahoma Avenue from 124th Street to 108th Street

When: August 2, 2021

Duration: 21-weeks

General Description: Water Supply Pipeline – Open Cut

Notes: 2-way traffic will be maintained with lane restrictions and flagging.
All local access will be maintained.



City of Muskego

Where: Moorland Road from College Avenue to Janesville Road

When: October 25, 2021

Duration: 4-weeks

General Description: Return Flow Pipeline – Open Cut

Notes: 2-way traffic will be maintained with lane restrictions and flagging.
All local access will be maintained.



Where: Moorland Road from Janesville Road to Woods Road

When: November 22, 2021

Duration: 3-weeks

General Description: Return Flow Pipeline – Open Cut

Notes: 2-way traffic will be maintained with lane restrictions and flagging.
All local access will be maintained.



UPDATE Where: Durham Drive from Woods Road to N. Cape Road

When: June 21, 2021

Duration: 23-weeks

General Description: Return Flow Pipeline – Open Cut

Notes: 2-way traffic will be maintained with lane restrictions and flagging.
All local access will be maintained.



Where: N. Cape Road from Durham Road to Ryan Road

When: September 13, 2021

Duration: 8-weeks

General Description: Return Flow Pipeline – Open Cut

Notes: N. Cape Road from Durham Road to Ryan Road will be closed to through traffic on September 13th for 8-weeks
See greatwateralliance.com for detour information.
All local access will be maintained.



City of Franklin, Milwaukee County

Where: Ryan Road at Loomis Road/STH 36

When: August 9, 2021

Duration: 12-weeks

General Description: Return Flow Pipeline – Trenchless Crossing

Notes: 2-way traffic will be maintained with lane restrictions and flagging.
All local access will be maintained.



Where: Ryan Road (STH 100) at Root River (west of 60th Street)

When: July 19, 2021

Duration: 17-weeks

General Description: Return Flow Pipeline – Trenchless Crossing

Notes: 2-way traffic will be maintained with lane restrictions and flagging.
HWY 100 eastbound lane west of 60th street lane closure.
All local access will be maintained.



Where: Ryan Road from 92nd Street to St. Martins Road

When: October 11, 2021

Duration: 3-weeks

General Description: Return Flow Pipeline – Trenchless Crossing

Notes: 2-way traffic will be maintained with lane restrictions and flagging.
All local access will be maintained.



UPDATE **Where:** Ryan Road (STH 100) from 68th Street to 60th Street

When: October 18, 2021

Duration: 2-weeks

General Description: Return Flow Pipeline – Trenchless Crossing

Notes: 2-way traffic will be maintained with lane restrictions and flagging.
All local access will be maintained.



Where: 60th Street from Ryan Road (STH 100) to Oakwood Road

When: August 16, 2021

Duration: 13-week

General Description: Return Flow Pipeline – Open Cut

Notes: South 60th Street at Ryan Road will be closed to through traffic on September 28th for 15-days

South 60th Street from Ryan Road to Airways Drive will be closed to northbound traffic on October 4th for 40-days.

South 60th Street from Franklin Drive to Oakwood Road will be closed to northbound traffic on October 21st for 16-days

See greatwateralliance.com for detour information.

All local access will be maintained.



Where: Oakwood Road

When: May 17, 2021

Duration: 28-months

General Description: Return Flow Pipeline – Outfall Building



This historic project will bring much needed water to Waukesha, and the Great Water Alliance is committed to completing the work in the most efficient and least disruptive ways possible. Thank you for your patience and cooperation during this construction.



Using Great Lakes Water the Right Way

www.greatwateralliance.com