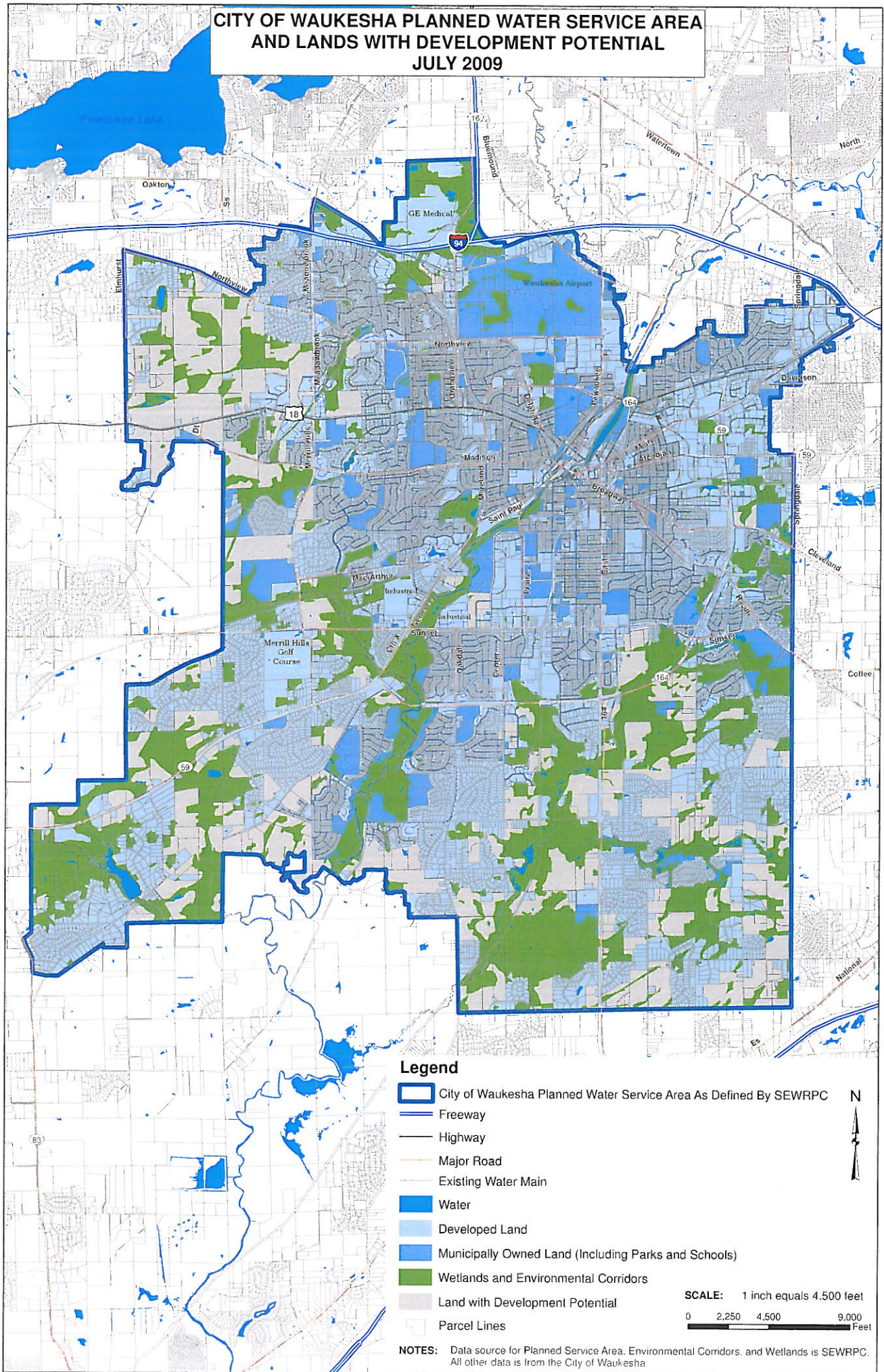


**CITY OF WAUKESHA PLANNED WATER SERVICE AREA
AND LANDS WITH DEVELOPMENT POTENTIAL
JULY 2009**



Legend

- City of Waukesha Planned Water Service Area As Defined By SEWRPC
- Freeway
- Highway
- Major Road
- Existing Water Main
- Water
- Developed Land
- Municipally Owned Land (Including Parks and Schools)
- Wetlands and Environmental Corridors
- Land with Development Potential
- Parcel Lines



SCALE: 1 inch equals 4,500 feet
 0 2,250 4,500 9,000 Feet

NOTES: Data source for Planned Service Area, Environmental Corridors, and Wetlands is SEWRPC. All other data is from the City of Waukesha.